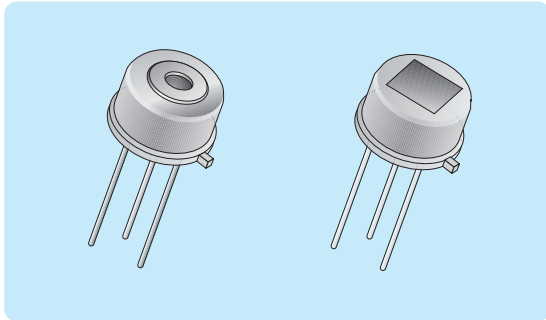


PASSIVE INFRA-RED (PIR)

A range of passive infra-red sensors which exhibit high sensitivity, offer reliable performance and have improved immunity to RFI and light (superior RFI immunity versions also available). Available in single and dual element, with choice of specification, or quad element which provides an enhanced field of view and the option of dual output.

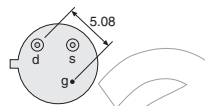
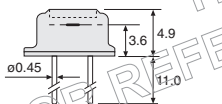
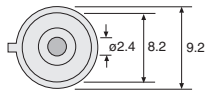


- ◆ Choice of **single, dual** or **quad** element
- ◆ High responsivity
- ◆ Wide spectral response
- ◆ High reliability
- ◆ Dual output version provided
- ◆ Superior RFI immunity types available



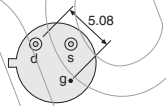
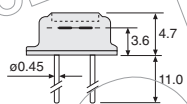
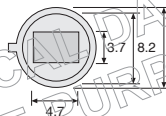
Dimensions (mm) & Connections

IRA-E410QW1, IRA-E410S1 & IRA-E410ST1

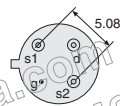
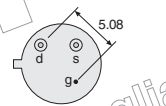
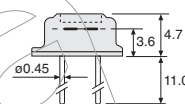
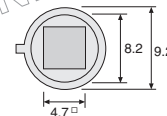


d = drain
s = source (output)
g = ground

IRA-E700ST0 & IRA-E710ST0 (STANDARD)

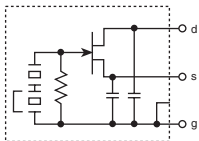


IRA-E900ST1, IRA-E910ST1 & IRA-E940ST1



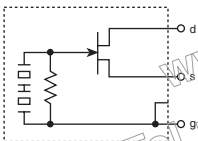
Schematics

Single Element



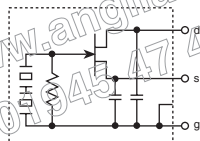
IRA-E410QW1, IRA-E410S1 & IRA-E410ST1

Dual Element



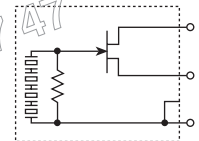
IRA-E700ST0

Dual Element



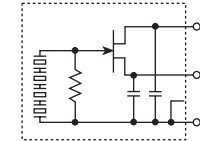
IRA-E710ST0 (superior RFI immunity)

Quad Element



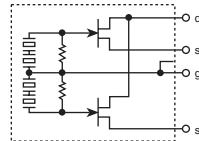
IRA-E900ST1

Quad Element



IRA-E910ST1 (superior RFI immunity)

Quad Element (dual output)



IRA-E940ST1

Manf. Part. No.	Single Element			Dual Element		Quad Element			mV p-p µm Vdc °C °
	IRA-E410QW1	IRA-E410S1	IRA-E410ST1	IRA-E700ST0	IRA-E710ST0*	IRA-E900ST1	IRA-E910ST1*	IRA-E940ST1†	
Sensitivity (500°K, 1Hz)	1.3	3.0	3.3	4.3	4.3	3.3	3.3	3.3	
Spectral response	4.3 max	1-20	5-14	5-14	5-14	5-14	5-14	5-14	
Optical filter	4.3 band pass	Non-selective	5 long pass	5 long pass	5 long pass	5 long pass	5 long pass	5 long pass	
Supply voltage	3-15	3-15	3-15	2-15	2-15	3-15	3-15	2-15	
Operating temperature range	-25 to +55	-25 to +55	-25 to +55	-40 to +70	-40 to +70	-25 to +55	-25 to +55	-25 to +55	
Storage temperature range	-30 to +100	-30 to +100	-30 to +100	-40 to +85	-40 to +85	-40 to +85	-40 to +85	-40 to +85	
Field of view	17 x 17	17 x 17	17 x 17	45 x 45	45 x 45	41 x 41	41 x 41	55 x 50	
anglia Order Code	IRA-E410QW1	IRA-E410S1	IRA-E410ST1	IRA-E700ST0	IRA-E710ST0*	IRA-E900ST1	IRA-E910ST1*	IRA-E940ST1†	

* superior RFI immunity types † dual output

PASSIVE INFRA-RED (PIR) *continued*

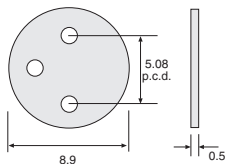
PIR ACCESSORIES

INSULATING PAD

CEL

A nylon pad suitable for insulating the Murata IRA type PIR sensors shown on the previous page.

Dimensions (mm)



Type	Manf. Part No.	anglia Order Code
Insulating Pad	51A539B	473007

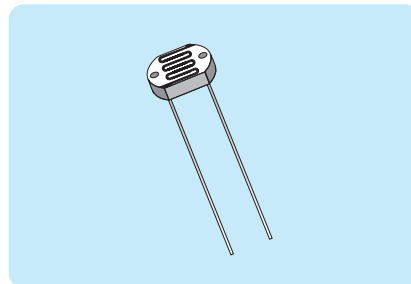
LIGHT DEPENDENT RESISTOR (CdS Cell)

Highly stable, sensitive cadmium sulphide photoconductive cell with a spectral response similar to that of the human eye. The resistance level falling as the light level rises. Miniature, open frame style.



MINIATURE, OPEN

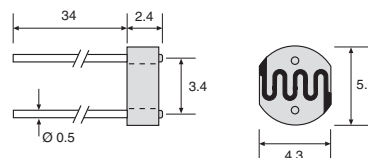
Housed in a moisture resistant epoxy coated open frame package.



Specification

Minimum dark resistance.....	20MΩ
Typ. resistance at 10 lux.....	50kΩ-140kΩ
Peak spectral response.....	590nm
Maximum voltage rating.....	150Vdc
Maximum power dissipation.....	100mW at 25°C
Operating temperature range.....	-30°C to +80°C

Dimensions (mm)



Manf. Part No. & anglia Order Code
VAC54

For details of our other range of sensors :

TEMPERATURE

HUMIDITY

SOUND

ENCODER

refer to the Sensors & Transducers section